

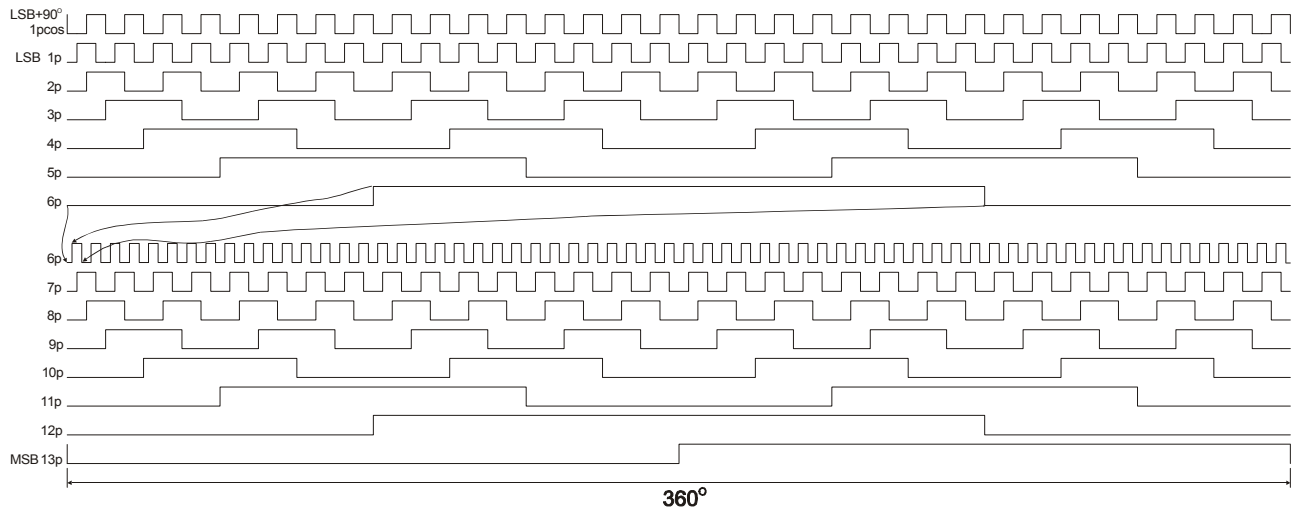
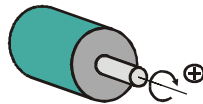
TECHNICAL DATA

FKP-6 A.A.G.14

Resolution	2^{14} bit
Supply voltage V_{CC}	+4.5 ÷ +20 V DC ¹
Output signals	
Output code	Grey ²
Type of output code	parallel ³
Type of output signals	“Push-Pull” [*]
Level of output signals	
log”0”	$\leq 0,8$ V
log”1”	$\geq V_{CC}-1$ V
Maximum error	± 1 bit
Maximum admissible revolutions	6000 RPM
Maximum shaft load	
Axial	5N
Radial	10N
Maximum admissible revolutions	6000 min^{-1}
Operating temperature	-10 ⁰ C to +60 ⁰ C.
Storage temperature	-20 ⁰ C to +70 ⁰ C.
Admissible relative humidity	85% at 25 ⁰ C
Degree of protection	IP 41/54
Weight	0,25 kg

^{*}Output signal levels are compatible with CMOS-/LSTTL at $V_{CC}=5$ V

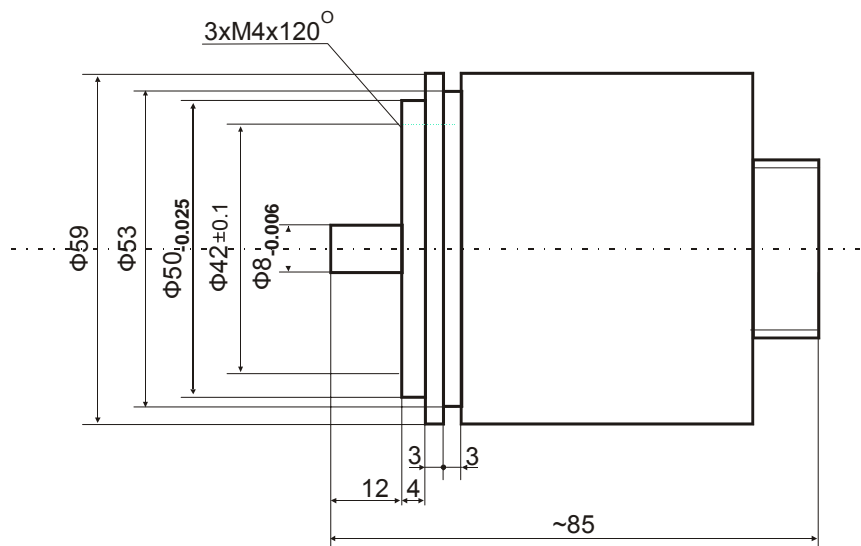
DIAGRAM OF THE OUTPUT SIGNALS (parallel Grey code)



OUTPUT COUPLING

Coupling pin number	Function at the output	Note
1	1p cos	LSB+90°el.
2	1p	LSB
3	2p	
4	3p	
5	4p	
6	5p	
7	6p	
8	7p	
9	8p	
10	9p	
11	10p	
12	11p	
13	12p	
14	13p	MSB
...	NC	NC
21	+Vcc	power supply
22	NC	NC
23	casing	casing
24	0V	power supply

DIMENSIONS



ON REQUEST:

1. Built-in DC/DC converter +10V÷+30V DC.
2. Output binary or customized code.
3. Serial output code.